

The Advisor

DATA-DRIVEN, HOLISTIC ENERGY CONSULTING

In This Issue

MARKET MOMENT

A brief look at the current state of the energy industry.

SOLUTIONS CENTER

Timely updates on new advances in sustainable energy and technologies.

WHAT'S NEW?

The latest (and greatest) updates at APPI Energy.

A WORD FROM WALT

Owner, Walter Moore, comments on 25 years in the industry.

APPI ENERGY

p. 800.520.6685

e. info@appienergy.com

w. appienergy.com

a. 112 E. Market Street
Salisbury, MD 21811

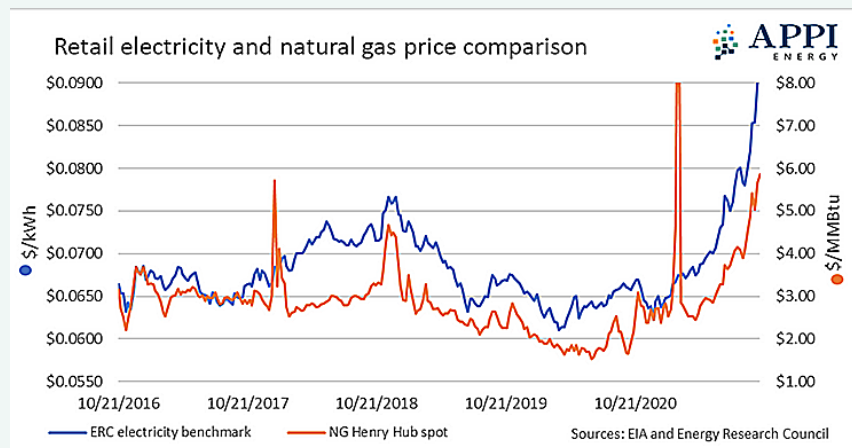


MARKET MOMENT

Since our last update, volatile Henry Hub natural gas spot prices rose an additional 3.6% while benchmark electricity prices were up nearly 9% (figure 1). New York power prices increased over 11% while Massachusetts saw the smallest increase at 7.7%.

Retail Electricity & Natural Gas Comparison (2016-2021)

Figure 1



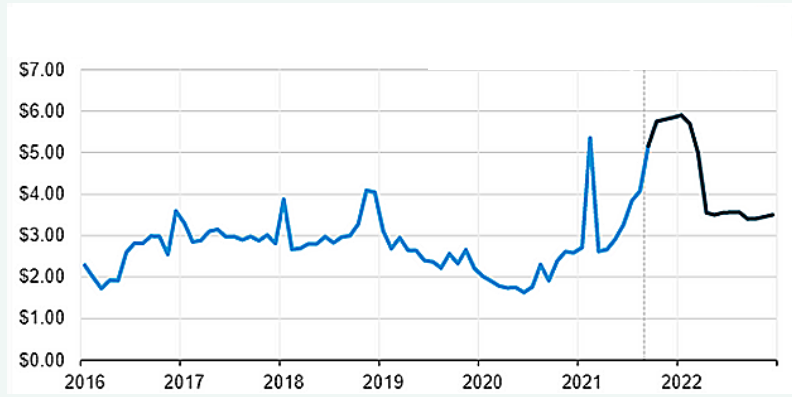
DRIVING PRICES HIGHER

Natural gas prices – Prices for natural gas have more than doubled in the last 6 months, hitting a 13 -year high earlier this month before retreating slightly last week (figure 2).

Strong international demand – Exports of natural gas and liquefied natural gas account for nearly 20% of the country’s natural gas production as prices in Europe and Asia continue to set records, reaching \$35 per million British thermal units (MMBtu) in Asia and nearly \$40/MMBtu in Europe in the first week of October.

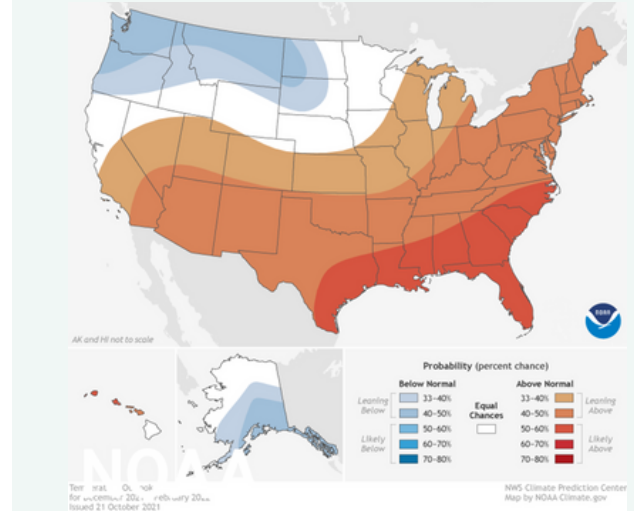
Henry Hub Natural Gas Spot Price (2016-2022)

Figure 2



Winter 2021/2022 Outlook

Figure 3



DRIVING PRICES LOWER

Early winter forecast – NOAA calling for above average winter temperatures in the East and Southeast with above average precipitation for the Midwest. Dry conditions will continue in the Southwest (figure 3).

Increased natural gas in storage – Thanks in part to mild Autumn temperatures, injections of natural gas into storage have reduced the deficit to the 5-year average to just over 4%, but still nearly 12% lower than this time last year (figure 4).

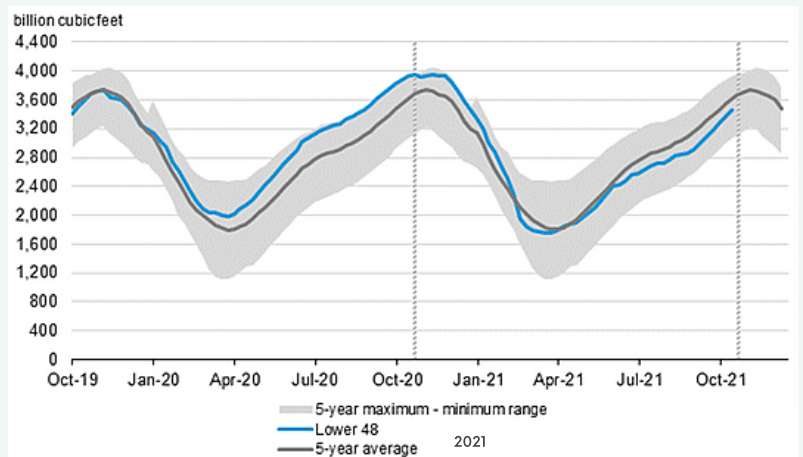
DID YOU KNOW?

From January to September, U.S. consumers bought **305,324** all-electric vehicles, an increase of **83 percent** from the same period in 2020, according to Kelley Blue Book.

All-electric vehicles are now **2.6 percent** of all new light duty cars and trucks sold in the country, up from **1.6 percent** at this time last year.

Working Gas in Underground Storage (compared with 5-year maximum and minimum)

Figure 4





Energy is among one of the largest cost factors to a business, large or small, however it isn't always a top priority. An energy strategy that makes sense, saves you time and money, and increases efficiencies and sustainability should be on your short list of 2022 goals. We can help you move from talking about an energy strategy to executing a strategy in the new year.

[Learn more about prioritizing an energy strategy here >>](#)



Upcoming Energy Solutions Webinars with:

Pennsylvania Association of Nonprofit Organizations:
November 10, 11am EST

[Register for the webinar >>](#)

WHAT'S NEW?

APPI Energy turned 25!

APPI Energy celebrated their 25th Anniversary this month! Beginning in 1996, Walter Moore created APPI at the introduction of energy deregulation. What began as a simple conversation over breakfast transformed into a 25 year legacy. He never imagined his hard work and perseverance would become the company that he is so very proud of today.



A WORD FROM WALTER

"The one word I would use to describe ourselves, our people, is the word **TRUST**. And the trust begins among ourselves, so that each team member can rely on the fact that they will be supported in all pulling that corporate oar together in one direction."

Walter Moore, Founder & CEO

APPI Energy, Salisbury MD

[To hear the full message from APPI Energy's Founder & CEO, Walter Moore, click here >>](#)

**All market data above is at the national level, but regional and local energy market conditions can vary widely. For an in-depth review of current energy market conditions impacting your organization, please contact our team of dedicated, expert Energy Consultants: 800-520-6685 or info@appienergy.com.*